



Fire and Rescue NSW Operations Bulletin 2011/01 Interface operations and Community Fire Units

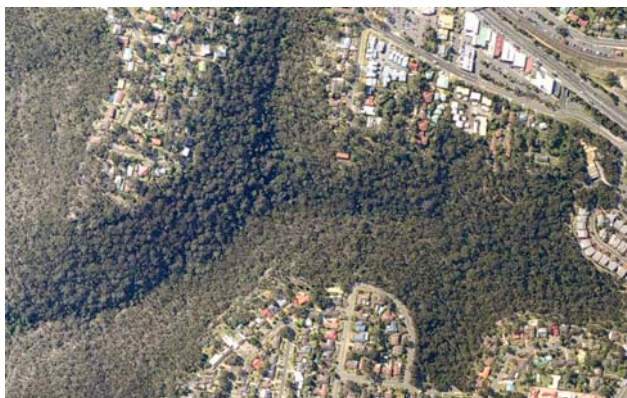
Issue

With an increased emphasis in Fire and Rescue NSW on community bushfire preparedness and effective tactics for combating bushfires in the bushland urban interface (Interface), firefighters need to ensure their bushfire fighting knowledge is current and regularly maintained.

In order to facilitate this, the Bushland Urban Interface Section has produced two videos: [Interface Operations and Safety](#) and [Know Your Role in the Community Fire Unit Program](#). Both videos are available via FireTube and will be posted to all Zone Offices and Fire Stations.

Interface operations and safety video

The Interface covers all areas where urban development encroaches on bushland. These areas include residential developments close to bushland, isolated pockets of bush in urban areas, and isolated developments surrounded by large areas of vegetation.



Interface bushfires present many challenges to firefighters. It is important that effective strategies and tactics are employed to combat them. The *Interface operations and safety* video provides important information on preparing for Interface fires ahead of the bushfire season, Interface fire risks and safety, suppression strategies and tactics, and advice on further Interface resources you can access.

Know your role in the Community Fire Unit Program video

The Community Fire Unit (CFU) Program is a sustainable bushfire risk management tool and should be considered as part of your community education activities in residential areas with high to very high bushfire risk.

CFU members are not firefighters. They are residents living in the Interface who are trained and equipped by FRNSW to prepare themselves, their families and their properties for the bushfire season.

These residents make informed decisions about whether they should leave early or stay and defend their homes from spot fires and ember attack in the event of



Operations Bulletin 2011/01

Interface operations and Community Fire Units

a bushfire, using FRNSW-supplied basic firefighting equipment. CFU activities follow national 'Prepare. Act. Survive.' strategies.

The *Know your role in the Community Fire Unit Program* video provides firefighters with valuable information on day to day and operational interactions with CFUs in their station area.

Actions

All firefighters and officers must watch the *Interface operations and safety* and *Know your role in the Community Fire Unit Program* videos.

Station Commanders must ensure that these videos are incorporated into their station drill programs as a matter of priority.

Once each crew has viewed these videos, Station Commanders must:

- sign this Bulletin and file it in their station's Operations Bulletin folder
- note the viewing of the videos in the Occurrence Book, and
- add the viewing of the videos to each firefighter's Record of Skills Maintenance log sheet.

Duty Commanders will audit these entries as part of the standard station inspection process.

Further reading

[SOG 3.7 Community Fire Units](#)

[SOG 3.7 Check sheet – Community Fire Unit](#)

[I-Zone Learning Manual](#)

[Bushland Urban Interface intranet pages](#)

Contact officers

Interface operations and safety

Station Officer John McNamara, Deputy Manager Interface
0418 278 207 or john.mcnamara@fire.nsw.gov.au

Know your role in the Community Fire Unit Program

Station Officer Dennis Nadazdy, Deputy Manager Community Fire Units
0417 657 156 or dennis.nadazdy@fire.nsw.gov.au

Noted, Station Commander	A	B	C	D	Other
Duty Commander					

Previous Operations Bulletin: [2010/03, Large hydrant covers.](#)